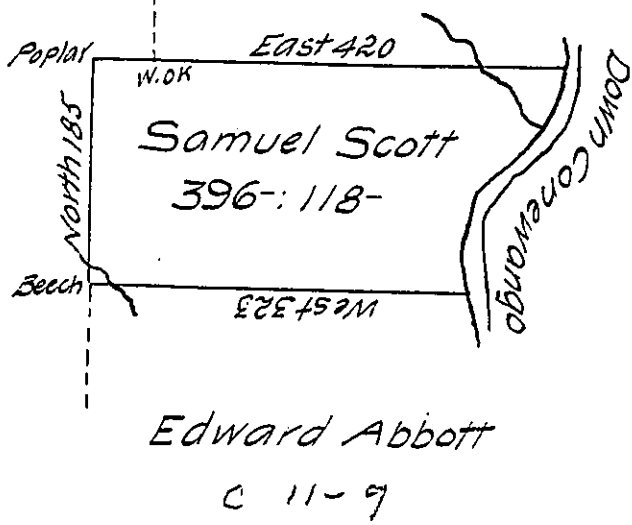


C 223-168

Abraham Scott



Courses on the River

- ~~S 6° E 34 1/2~~
- ~~S 5° W 35~~
- ~~S 55° W 70~~
- ~~S 11° W 57~~
- SOUTH 35 1/2
- SW --- 57
- S 55 W - 70
- S 5 W - 35
- S 6 E - 34 1/2
- 232'

Survey'd on the 3<sup>rd</sup> day of July 1795 the above de-  
 scribed Tract of Land in District No 6 in pursuance of a Warrant  
 to Samuel Scott, dated 20<sup>th</sup> December 1793, containing Three Hundred,  
 Ninety Six Acres, and 118 Perches and allowance of Six per Cent.

Sam<sup>l</sup> Nicholson D.S.

To Daniel Brodhead Esq<sup>r</sup> }  
 Surveyor General }

IN TESTIMONY that the above is a copy of the original remaining on file in  
 the Department of Internal Affairs of Pennsylvania, made  
 conformably to an Act of Assembly approved the 16th day of  
 February, 1833, I have hereunto set my Hand and caused  
 the Seal of said Department to be affixed at Harrisburg,  
 this fifteenth day of December 1906

*Isaac D. Brown*  
 Secretary of Internal Affairs.